

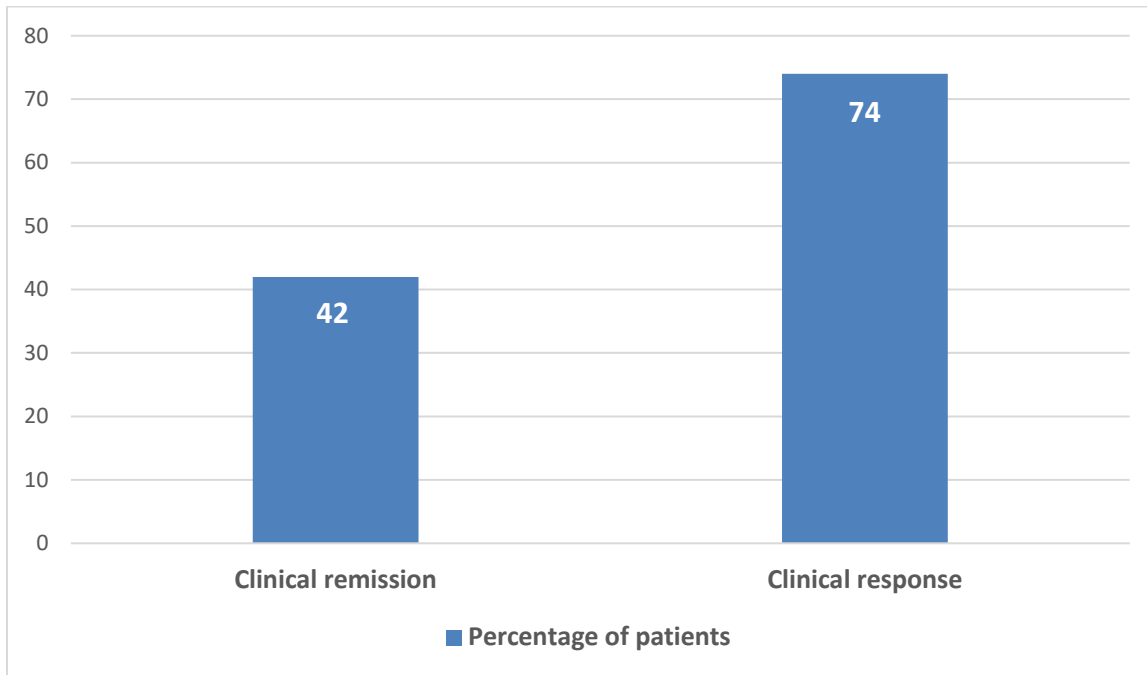
Clinical outcomes of first 108 patients completing SmartFocus® electric field navigated rTMS therapy for treatment of major depressive disorder (MDD)

Clinical outcomes of SmartFocus® rTMS treated patients are being collected in a registry with information being provided by participating clinical sites using the technology.

Of the first 108 patients completing treatment at clinical sites in the U.S.A. 45 (42%) had achieved clinical remission and 80 (74%) had obtained a clinical response at end of treatment (Figure 1). Further, the patient reported experience of receiving treatment was generally very positive as reflected by a mean score of 8.8 on a scale of 0 to 10. (1)

The results are based on the patient reported outcome measures Beck's Depression Inventory (BDI, range of scores of test 0 – 63) and Patient Health Questionnaire – 9 (PHQ-9, range of scores of test 0-27). Remission was defined as a PHQ9 score of less than 5 or BDI score of less than 10 while clinical response was defined as a PHQ9 score of less than 10 or BDI score of less than 19 at end of treatment.

Figure 1. Clinical remission and response rates at end of SmartFocus rTMS treatment in patients with Major Depressive Disorder



1) Data on file at Nexstim Plc